



# FLIP 'N SEAL

Slide-Out Sealing System

AFTERMARKET PARTS 2024

|                    |                     |                        |                       |                         |                      |
|--------------------|---------------------|------------------------|-----------------------|-------------------------|----------------------|
| <b>PROFILE</b>     |                     |                        |                       |                         |                      |
| <b>PART NUMBER</b> | <b>04002890</b>     | <b>04002891</b>        | <b>04002898</b>       | <b>04002897</b>         | <b>04003096</b>      |
| <b>DIMENSIONS</b>  | 2" WIPE / .91" BULB | 2.75" WIPE / .91" BULB | 2.5" WIPE / .91" BULB | 2.88" WIPE / 1.13" BULB | 2" WIPE / 1.13" BULB |
| <b>QUANTITY</b>    | 40' per box         | 40' per box            | 40' per box           | 35' per box             | 35' per box          |

|                    |                                    |                                    |                                       |                       |                        |                       |
|--------------------|------------------------------------|------------------------------------|---------------------------------------|-----------------------|------------------------|-----------------------|
| <b>PROFILE</b>     |                                    |                                    |                                       |                       |                        |                       |
| <b>PART NUMBER</b> | <b>04002894</b>                    | <b>04002895</b>                    | <b>04003097</b>                       | <b>04002896</b>       | <b>04002900</b>        | <b>04003140</b>       |
| <b>DIMENSIONS</b>  | 2" WIPE / .91" BULB<br>2" WALL CAP | 3" WIPE / .91" BULB<br>2" WALL CAP | 2" WIPE / .91" BULB<br>1.25" WALL CAP | 1.5" WIPE / .91" BULB | 1.5" WIPE / 1.13" BULB | 1.5" WIPE / .91" BULB |
| <b>QUANTITY</b>    | 20' per box                        | 20' per box                        | 20' per box                           | 1 piece (14') per box | 1 piece (14') per box  | 1 piece (14') per box |

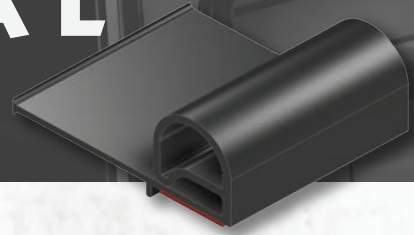
|                    |                 |                 |                 |                 |                 |                 |
|--------------------|-----------------|-----------------|-----------------|-----------------|-----------------|-----------------|
| <b>PROFILE</b>     |                 |                 |                 |                 |                 |                 |
| <b>PART NUMBER</b> | <b>04002902</b> | <b>04002892</b> | <b>04003142</b> | <b>03011049</b> | <b>04003131</b> | <b>04002893</b> |
| <b>DIMENSIONS</b>  | .80" BULB       | .91" BULB       | 0.91 H x .90" W | 1" H x .875" W  | 0.92 H x .98" W | 2" WIPE         |
| <b>QUANTITY</b>    | 40' per box     | 40' per box     | 40' per box     | 40' per box     | 40' per box     | 40' per box     |

|                    |  |  |  |                                      |
|--------------------|--|--|--|--------------------------------------|
| <b>PROFILE</b>     |  |  |  |                                      |
| <b>PART NUMBER</b> | <b>02006514</b>                                | <b>02006543</b>                            | <b>02006545</b>                                | <b>04002899</b>                      |
| <b>DESCRIPTION</b> | FOR USE WITH WORM GEAR DRIVEN SLIDE MECHANISMS | FOR USE WITH CABLE DRIVEN SLIDE MECHANISMS | FOR USE WITH SPUR GEAR DRIVEN SLIDE MECHANISMS | 1.3" SPLASH-GUARD x 3.5" DOUBLE WIPE |
| <b>QUANTITY</b>    | 1 LEFT, 1 RIGHT PER BOX                        | 1 LEFT, 1 RIGHT PER BOX                    | 1 LEFT, 1 RIGHT PER BOX                        | 1 piece (14') per box                |



# FLIP 'N SEAL

Slide-Out Sealing System



## THE INDUSTRY STANDARD




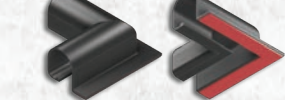
The most innovative patented slide-out system from Jaeger-Unitek is now considered the new industry standard. The one component design eliminates the consumer and dealer concerns with a two piece seal design and improves installation and maintenance. Being the most versatile seal available, the Flip 'N Seal® Slide-Out System fulfills the most demanding requirements at the OEM, distributor and with end users. Using the highest performing automotive engineered grade polymers in the industry and manufactured in an automotive IATF Certified manufacturing facility, the Flip 'N Seal® system provides the complete package of sealing solutions in the recreational vehicle industry.

### INSTALLATION GUIDE

- 1 Clean and prepare the substrate surface with alcohol wipes for effective adhesion
- 2 Cut the top and side seals to desired lengths
- 3 Remove adhesive tape liner from the back of the Flip 'N Seal®
- 4 Apply side seals leaving the bulb flush with the top of the slide-out opening; trim length at bottom
- 5 Apply top seal across the header
- 6 Trim one end of the wipe and locator leg to 1/4 to 1/2 inch
- 7 Tuck top wipe behind side bulb and mechanically fasten
- 8 Using staples or screws, mechanically fasten top and side seals behind the bulb

### MATERIAL & DESIGN FEATURES

- ✓ Low compression set for effective long-term sealing
- ✓ Patented one-component, integrated wipe and bulb for easy installation
- ✓ Proven automotive grade materials
- ✓ Exceptional UV weather-ability, combined with high performance heat aged temperature cycling
- ✓ Anti-friction coating for easy installation on line
- ✓ Reduced scrap & SKU consolidation by combining two components into one design

|                    |  |  |
|--------------------|--|--|
|                    |  <b>StyleCap®</b> |  <b>StyleCap®</b> |
| <b>PROFILE</b>     |                   |                  |
| <b>PART NUMBER</b> | <b>02006544</b>  | <b>02006546</b>  |
| <b>DESCRIPTION</b> | FOR USE WITH GEAR DRIVEN SLIDE MECHANISMS  | FOR USE WITH THROUGH FRAME SLIDE MECHANISMS  |
| <b>QUANTITY</b>    | 1 LEFT, 1 RIGHT PER BOX  | 1 LEFT, 1 RIGHT PER BOX  |



- ✓ Designed to fit seamlessly with the Flip 'N Seal® system
- ✓ OEM Approved
- ✓ Aesthetic design that also provides additional protection to slide-out room corners